

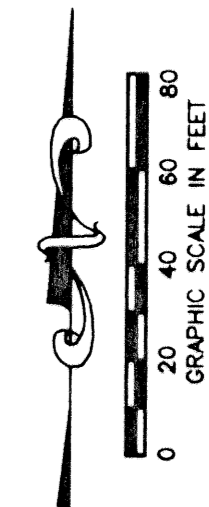
MIRASOL PARCEL TWELVE

PART OF GOLF DIGEST P.C.D.
SECTION 4, TOWNSHIP 42 SOUTH, RANGE 42 EAST,
CITY OF PALM BEACH GARDENS,
PALM BEACH COUNTY, FLORIDA
SHEET 3 OF 5

136

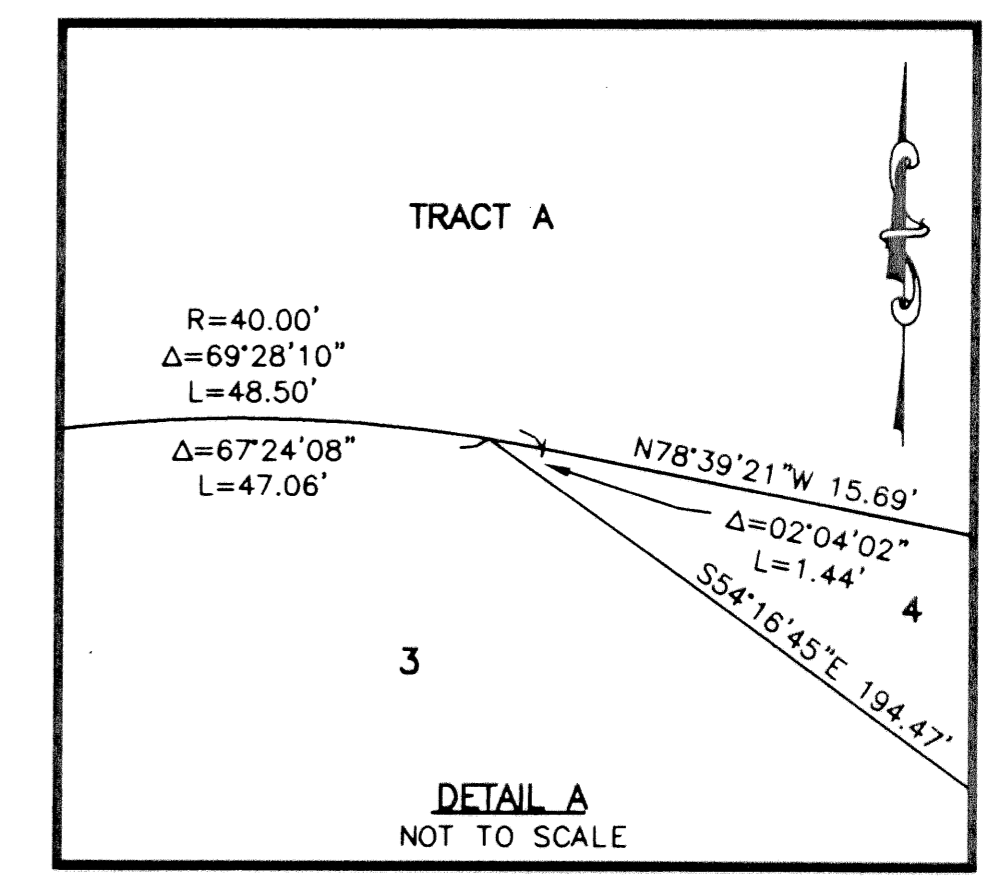
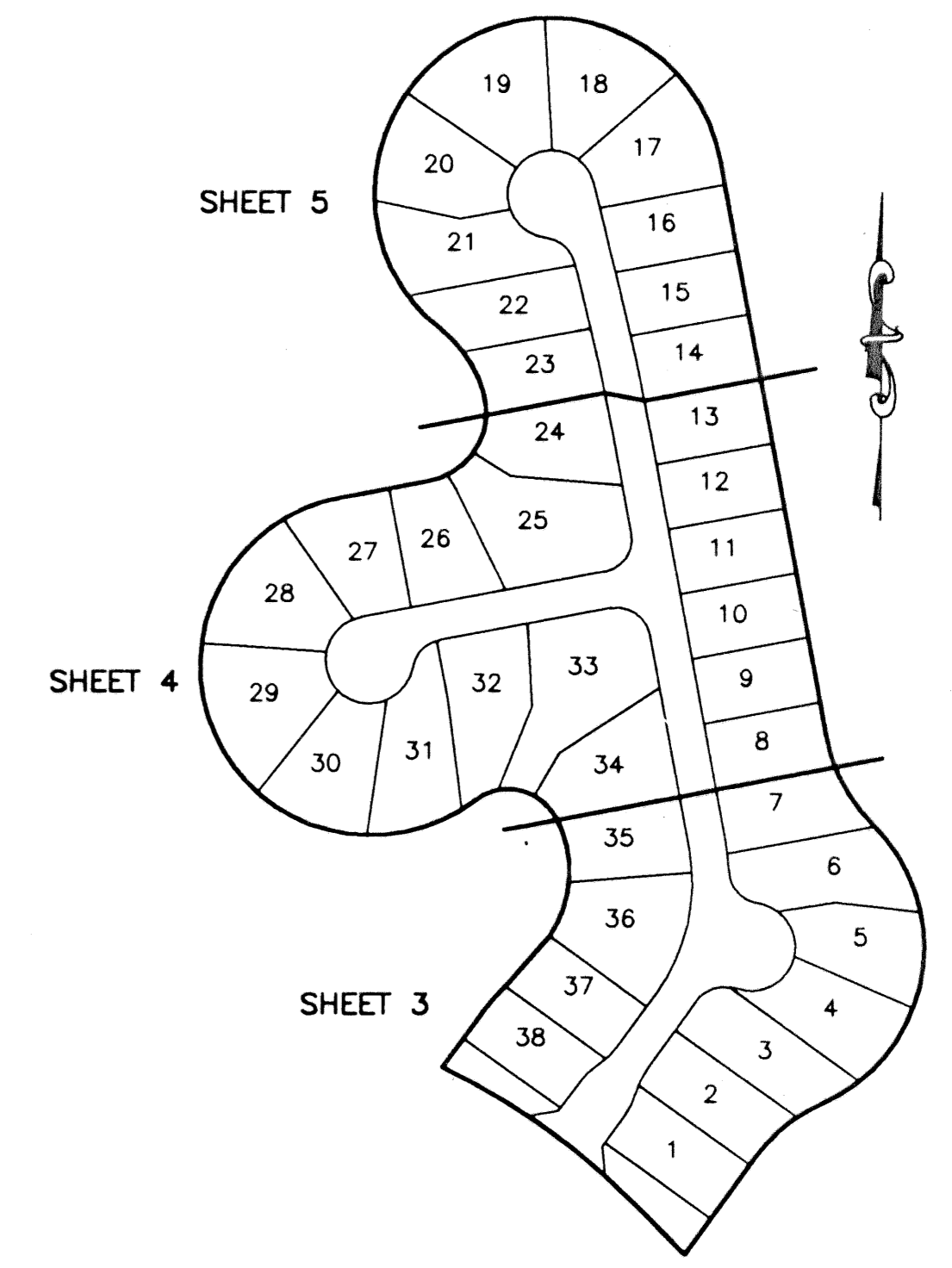
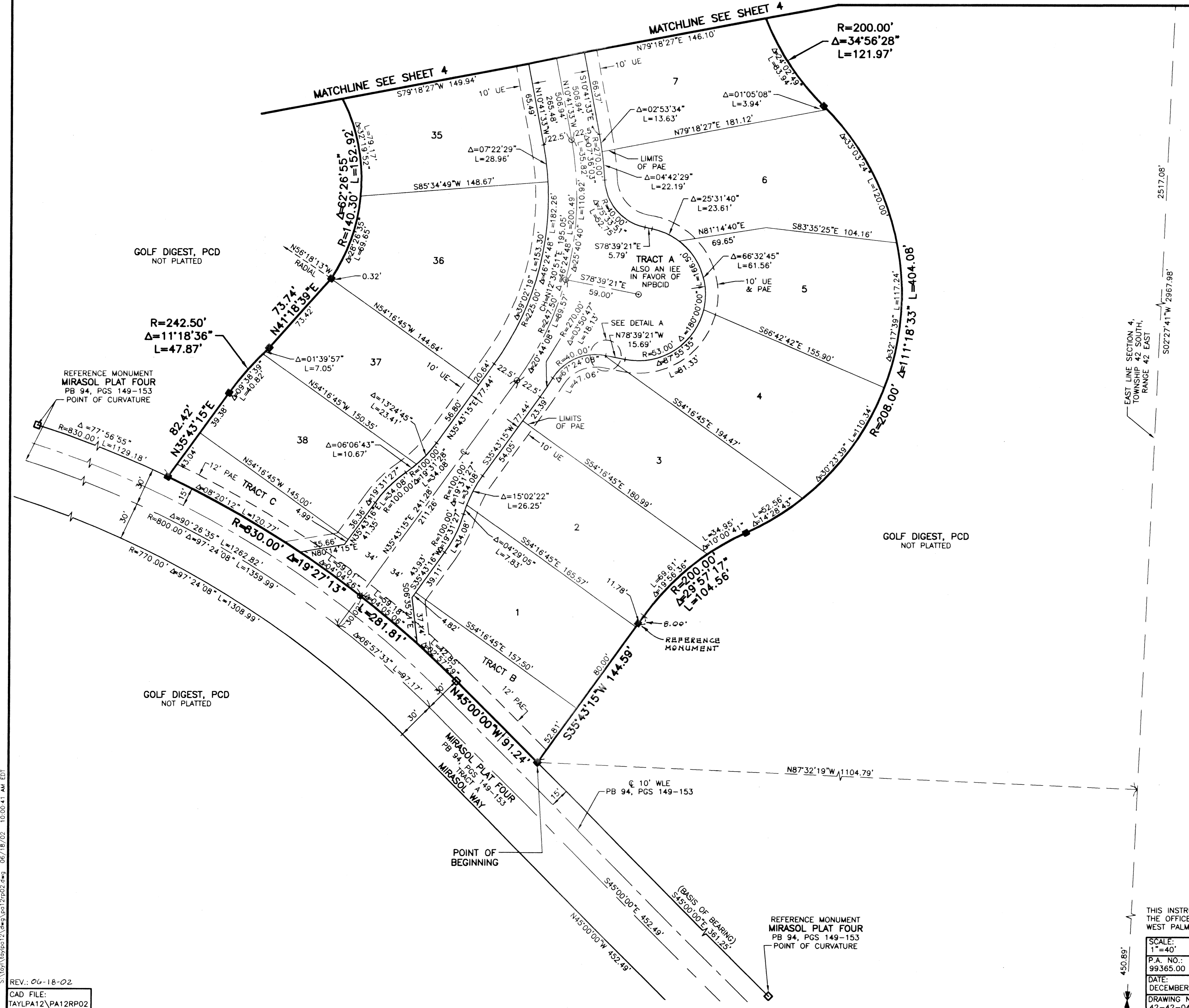
LEGEND

- Δ CENTRAL (DELTA) ANGLE
- CH CHORD
- IEE INGRESS-EGRESS EASEMENT
- L ARC LENGTH
- NPBCID NORTHERN PALM BEACH COUNTY IMPROVEMENT DISTRICT OFFICIAL RECORD BOOK
- ORB OFFICIAL RECORD BOOK
- PAE PEDESTRIAN ACCESS EASEMENT
- PB PLAT BOOK
- PC PAGE
- PCD PLANNED COMMUNITY DEVELOPMENT
- R RADIUS
- UE UTILITY EASEMENT
- WLE WATER LINE EASEMENT
- PERMANENT REFERENCE MONUMENT FOUND LB 048 (4"x4" CONCRETE)
- PERMANENT REFERENCE MONUMENT SET LB 048 (4"x4" CONCRETE)
- PERMANENT CONTROL POINT SET LB 048
- ⊕ CENTERLINE



STATE OF FLORIDA
COUNTY OF PALM BEACH
THIS PLAT WAS FILED FOR
RECORD _____ DAY OF _____
AD, 2002 AND DULY RECORDED
IN PLAT BOOK _____ ON PAGES
_____ AND _____
DOROTHY H. WILKEN, CLERK
BY: _____, D.C.

CIRCUIT COURT SEAL



EAST LINE SECTION 4,
TOWNSHIP 42 SOUTH,
RANGE 42 EAST

THIS INSTRUMENT WAS PREPARED BY MARY HANNA CLODFELTER, P.S.M. IN THE OFFICES OF MOCK, ROOS & ASSOCIATES, INC., 5720 CORPORATE WAY, WEST PALM BEACH, FLORIDA 33407.

SCALE:
1"=40'
P.A. NO.:
99365.00
DATE:
DECEMBER, 2001
DRAWING NO.
42-42-04-113

FLORIDA L.B. NO. 48
MOCK • ROOS
ENGINEERS • SURVEYORS • PLANNERS
5720 Corporate Way, West Palm Beach, Florida 33407
(561) 663-3113, fax 478-7248

MIRASOL PARCEL TWELVE
PART OF GOLF DIGEST P.C.D.
SITUATE IN SECTION 4,
TOWNSHIP 42 SOUTH, RANGE 42 EAST,
CITY OF PALM BEACH GARDENS,
PALM BEACH COUNTY, FLORIDA

SHEET 3 OF 5

S:\lay\lay\pa12\img\pa12r02.dwg 06/18/02 10:00:41 AM EDT

REV.: 06-18-02
CAD FILE:
TAYLPA12\PA12R02